

# VP Shielded room filters

Current Ratings: **3,10,16,32,63,80,100,200,225,400** AMPS.

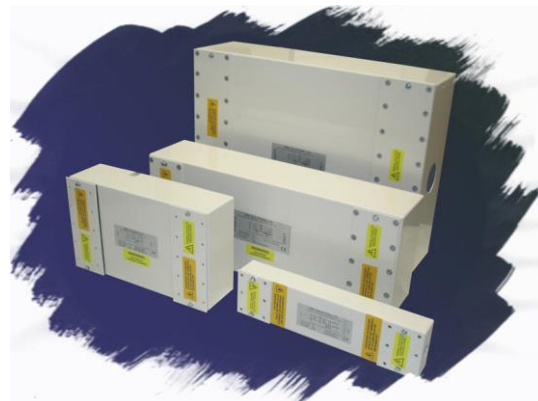
Operating Voltage: Single Phase, Two Phase & Three Phase. 230V to 520VA.C (DC 600V)

The VP (Very high performance) filter range are designed and tested for shielded room requirements, for attenuation from 100kHz – 10GHz at 100dB.

Shielded rooms require high levels of attenuation to ensure no conducted / radiated emissions are either imported or exported from the room. The filters come in 2, 3 or 4 line formats and have current ratings up to 3000Amps per phase. Transient suppression can be added as an option to the filters to give protection against induced transients from EMP sources.

The filters are housed in steel enclosures that are then plated & painted for protection.

*\*Custom options and higher current ratings are available for this range, please contact for details.*



## TYPICAL APPLICATIONS

- Shielded enclosures
- IT installation
- Computer rooms
- Banks
- Military installations

## COMMERCIAL ADVANTAGES

- Assists compliance with the EMC directive
- State of the art technology ensures superior performance
- Competitively priced
- Compact size - Reduced weight - Cost effective component

## TECHNICAL ADVANTAGES

- High current capability - Micro size
- High common & differential mode insertion loss
- Improved low frequency performance
- Optional input transient suppression to suit application

## Technical Specifications

Current (Amps)	No of Lines	Max Voltage / Frequency		Max AC Volt Drop @ Full Load	Typical Earth Leakage mA (Worst case)			Inductance Per Line (Typical) mH	Transient Energy Absorption (Typical)	Storage Temp Range	Operating Temp.	Temp Rise @ Full Load	Termination Type		Weight (Kg) (approx)		BOX STYLE
		2 LINE	3 / 4 LINE		Std	LE	400 Hz						2 Line	2 Line	2 Line	4 line	
3	2/3/4	275V AC 300V DC	520V AC 600V DC	<2V/Line	200	20	500	7	50J Optional	-25 ~ +85°C	-20 +50°C	<35°C	M3	M3	4	10	A
10					500	20	500	5	75J Optional				M3	M3	5	10	A
16					500	20	500	3	75J Optional				M5	M5	9	10	B
32					1000	40	1000	2	75J Optional				M5	M5	9	10	B
63					2000	40	2000	0.7	150J Optional				M5	M5	26	20	B
100					2000	40	4000	0.3	150J Optional				M10	M10	29	30	C
200					2000	40	4000	0.20	200J Optional				M10	M10	39	42	C
400					2000	40	4000	0.20	200J Optional				M10	M10	42	45	D

## STANDARDS

The VP range of filters are built in accordance with the relevant BS, VDE, UL, CE & CSA safety standards. This range also conforms to MIL-STD 220A and the electrical characteristics of Mil-F-15733. All Total EMC Products filters & power supplies are designed to meet the latest requirements for Health and Safety, Particularly EN 60939-2-2005.

## REGULATIONS

From the 15th of December 2004 all electrical/electronic apparatus - with few exceptions - sold or taken into service within the European Community must comply with the essential requirements of the EMC directive 2014/30/EU. Failure to do so is a criminal offence in the U.K.

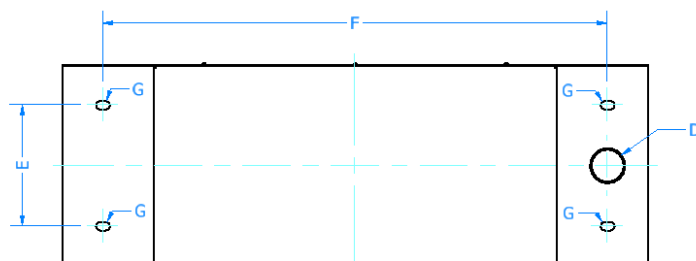
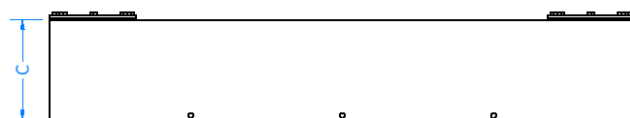
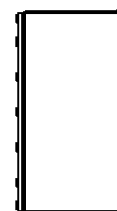
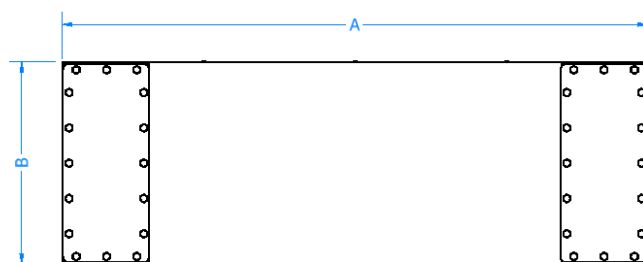
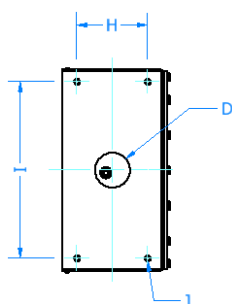
## Dimensional Data

BOX STYLE VP	A mm	B mm	C mm	D mm	E mm	F mm	G mm	H mm	I mm	J mm
A	450	180	75	21	140	360	6.5	55	145	M4
B	580	200	100	35	120	500	8.5	70	175	M4
C	750	410	120	53	210	640	10.5	80	350	M6
D	970	510	200	65	300	840	12	157	460	M6

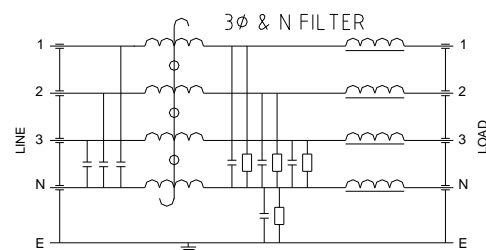
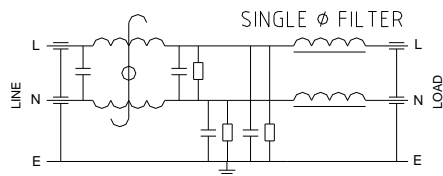
VP

BOX STYLE LE	A mm	B mm	C mm	D mm	E mm	F mm	G mm	H mm	I mm	J mm
A	600	180	75	21	140	510	6.5	55	145	M4
B	820	200	100	35	120	730	8.5	70	175	M4
C	1068	410	120	53	210	958	10.5	80	350	M6
D	1305	510	200	65	300	1155	12	157	460	M6

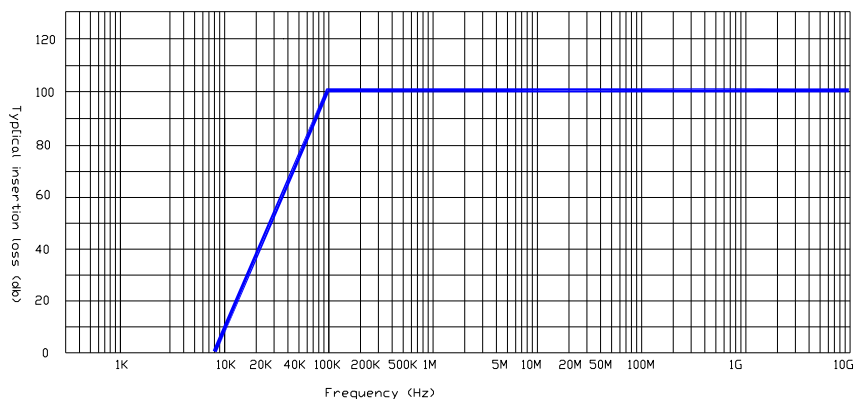
VP LE



## Schematics



## Performance characteristics insertion loss curves



## Additional Options – EMC Threaded bulkhead Gland

Total EMC are able to supply EMC glands with the filter,  
Please call to find out more information and costings

## Part number / ordering information

\*\*\*/\*/VP/\*/\*

\*\*\* = Amp Rating of filter

\*\* = VP, Very High Performance

- = None

\* = No of Lines on filter (2,3,4)

T = Transient Protection,

**Example:** 016/3/VP/ (This is a 16A 3 line VP unit with no Transient protection)

In addition to the standard range of filters & power supplies, Total EMC Products specialize in the design and manufacture of filters to suit your specific requirements. Due to continuous development Total EMC Products Ltd reserve the right to amend any information contained within this datasheet without prior notice.

© 10/2012 Total EMC Products Ltd. E & OE

The contents of the datasheet must not be copied by any means without prior written agreement.