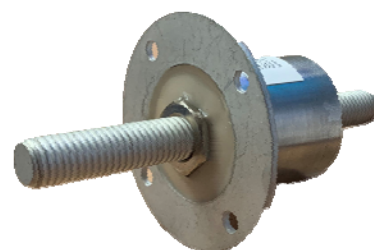


# TL2654 Feedthrough Filter

This single line, high performance feed-through filter provides excellent EMI/RFI protection. Offering high attenuation. This is an economical alternative to dedicated filter units, where multiple input or output power lines require suppression.

Current Ratings: 100 Amps  
Operating Voltage: 440VAC / 600VDC (TL2654)



## TYPICAL APPLICATIONS

- Screened rooms.
- High frequency welding equipment.
- Power supplies.
- Telecom systems.
- Medical Applications.
- Military.

## ELECTRICAL SPECIFICATIONS

- Rated voltage ( $V_R$ ): 440VAC 50/60Hz
- Rated current ( $I_R$ ): referred to 40°C
- Insertion Loss (dB.): see table
- Climatic category: GPC (40/085/56);
- Temperature range: -20°C to +70°C

## MECHANICAL SPECIFICATIONS

Manufacture: brass case and stud that is tin plated; Metric stud, nut and washers (L2654)

**Connections:** Metric M6 full nuts, spring washers, plain flat washers and threaded M6 bar.

Note: on screwing the cable to the filter, the lock nut must be held in position to avoid a torque to the threaded bar inside the filter.

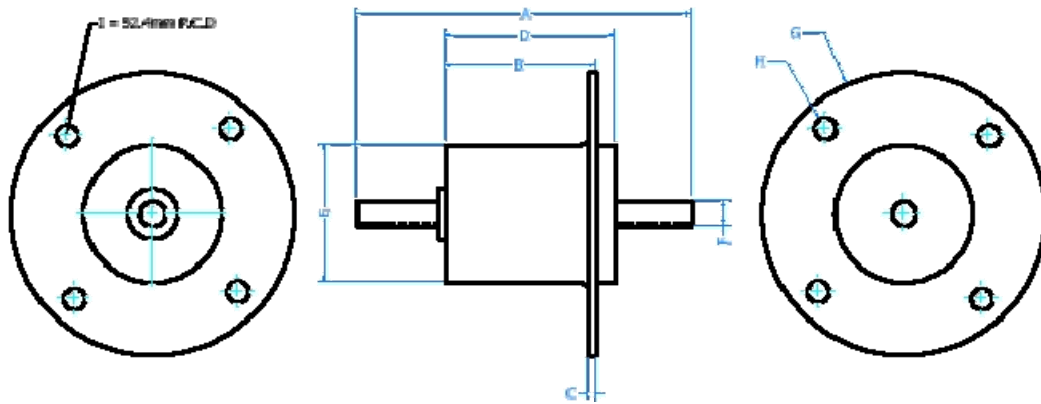
## TECHNICAL ADVANTAGES

Current rating 100A.  
Excellent attenuation up-to 1GHz.  
Rugged resin sealed construction.  
Flange-mounting.

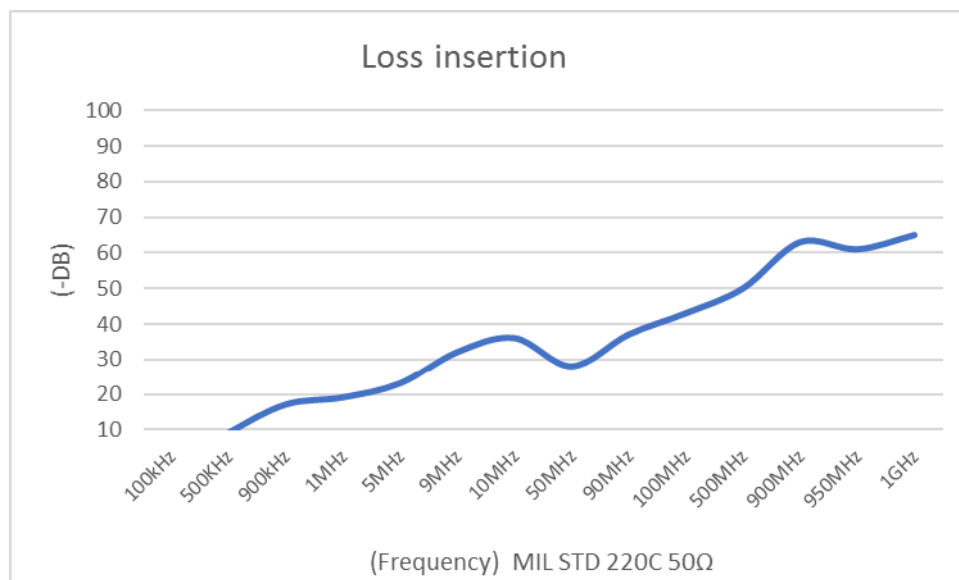
## TECHNICAL SPECIFICATIONS

Part no.	In (A)	VAC/VDC	Cp (uF)	Temperature Range C	Dimensions (mm)								
					A	B	C	D	E	F	G	H	I
TL2654	100	440/600	0.25	-20 - +70	120.00	38.50	2.2	40.00	37.00	12.00	68.00 Ø	X4 5.30 Ø	52.40 P.C.D

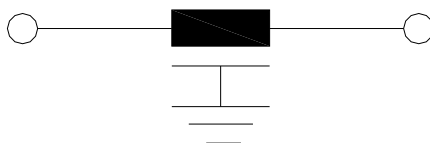
## DIMENSIONS & CASE STYLES



## PERFORMANCE GRAPH (INSERTION LOSS)



ELECTRICAL SCHEMATIC (Pi configuration)



ORDERING INFORMATION

# TL2654/12/THK

Other sizes available on request

In addition to the standard range of filters & power supplies, Total EMC Products Ltd specialize in the design and manufacture of filters to suit your specific requirements. Due to continuous development Total EMC Products Ltd reserve the right to amend any information contained within this datasheet without prior notice.  
01/2016 Total EMC Products Ltd. E & OE  
The contents of the datasheet must not be copied by any means without prior written agreement.