

HP Shielded room filters

Current Ratings: **3,10,16,32,63,100,200,400** AMPS.

Operating Voltage: Single Phase, Two Phase & Three Phase. 230V to 520VAC.

The HP (high performance) filter range are designed and tested for shielded room requirements, for attenuation from 100kHz – 10GHz at 80dB, this range of filters will also keep attenuating up to 40GHz and beyond. Shielded rooms require high levels of attenuation to ensure no conducted / radiated emissions are either imported or exported from the room. The filters come in 2-, 3- or 4-line formats and have current ratings up to 3000Amps per phase. Transient suppression can be added as an option to the filters to give protection against induced transients from EMP sources. The filters are housed in steel enclosures that are then plated & painted for protection.

**Custom options and higher current ratings are available for this range please contact for details*



TYPICAL APPLICATIONS

- Shielded enclosures.
- IT installation
- Computer rooms
- Banks
- Military installations

COMMERCIAL ADVANTAGES

- Assists compliance with the EMC directive.
- State of the art technology ensures superior performance.
- Competitively priced
- Compact size - Reduced weight - Cost effective component.

TECHNICAL ADVANTAGES

- High current capability - Micro size
- High common & differential mode insertion loss
- Improved low frequency performance.
- Optional input transient suppression to suit application.

Technical Specifications

Current (Amps)	No of Lines	Max Voltage / Frequency		Max AC Volt Drop @ Full Load	Typical Earth Leakage mA (Worst case 2 phases disconnected)			Inductance Per Line (Typical) mH	Transient Energy Absorption (Typical)	Storage Temp Range	Operating Temp.	Temp Rise @ Full Load	Termination Type		Weight (Kg) (approx) (HP filters)		BOX STYLE
		2 LINE	3 / 4 LINE		Std	LE	400 Hz								2 Line	4 line	
3	2/3/4	275V AC	520V AC	<2V/Line	50 (200)	10 (30)	80	7	50J Optional	Standard -25 ~ +85°C LT Version -40 ~ +85°C	Standard -20 ~ +50°C LT Version -40 ~ +60°C	<35°C	M3	M3	3	8	A
10					120 (500)	10 (30)	80	5	75J Optional				M3	M3	4	8	A
16					120 (500)	30 (90)	240	3	75J Optional				M5	M5	8	8	B
32					120 (500)	40 (120)	320	2	75J Optional				M5	M5	8	8	B
63					500 (2000)	40 (120)	320	0.7	75J Optional				M5	M5	25	28	B
100					500 (2000)	50 (150)	400	0.3	150J Optional				M10	M10	28	28	C
200					500 (2000)	50 (150)	400	0.15	150J Optional				M10	M10	38	40	C
400					500 (2000)	50 (150)	400	0.20	200J Optional				M10	M10	42	45	D

STANDARDS

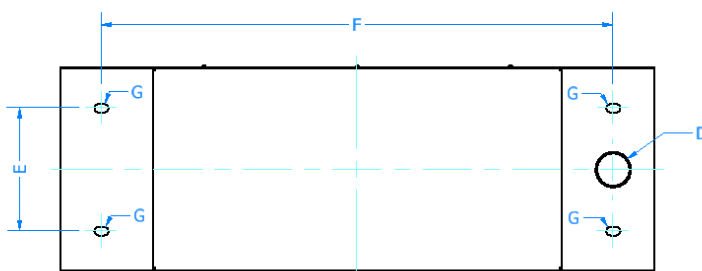
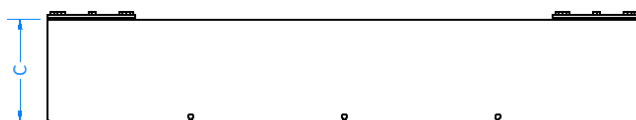
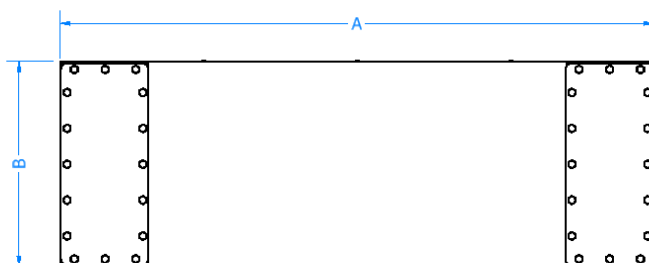
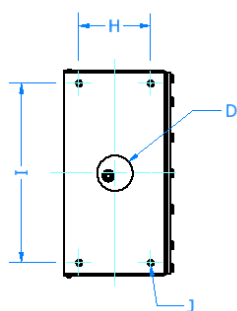
The HP range of filters are built in accordance with the relevant BS, VDE, UL, CE & CSA safety standards. This range also conforms to MIL-STD 220A and the electrical characteristics of Mil-F-15733. All Total EMC Products filters & power supplies are designed to meet the latest requirements for Health and Safety, Particularly EN 60939-2:2005.

REGULATIONS

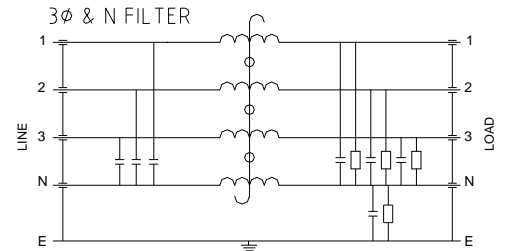
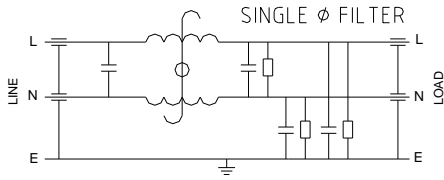
From the 15th of December 2004 all electrical/electronic apparatus - with few exceptions - sold or taken into service within the European Community must comply with the essential requirements of the EMC directive 2014/30/EU. Failure to do so is a criminal offence in the U.K.

Dimensional Data

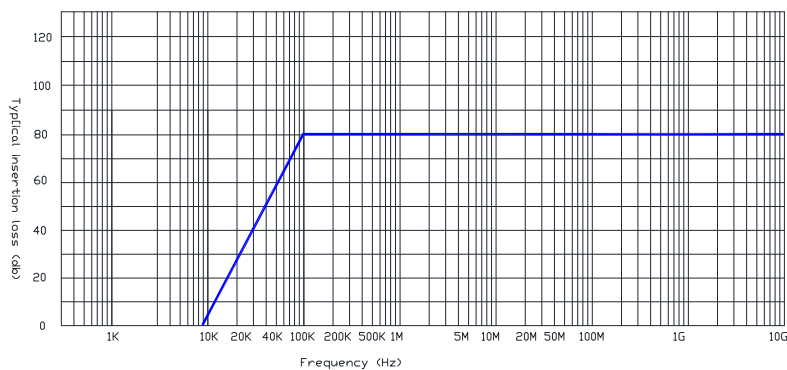
BOX	A mm	B mm	C mm	D mm	E mm	F mm	G mm	H mm	I mm	J mm
A	450	180	75	21	140	360	6.5	55	145	M4
B	580	200	100	35	120	500	8.5	70	175	M4
C	750	410	120	53	210	640	10.5	80	350	M6
D	970	510	200	65	300	840	12	157	460	M6



Schematics



Performance characteristics insertion loss curves



Additional Options – EMC Glands

EMC Glands are an option with this filter range, please call to find out more information and costing

Part number / ordering information

***/*/**HP**/*/**

*** = Amp Rating of filter

HP, High Performance

** = LT (Low Temperature range),

* = No of Lines on filter (2,3,4)

* = **T** (Transient Protection), - = None

Example: 016/3/HP/- (This is a 16A 3 line HP unit with no protection)

In addition to the standard range of filters & power supplies, Total EMC Products specialize in the design and manufacture of filters to suit your specific requirements. Due to continuous development Total EMC Products Ltd reserve the right to amend any information contained within this datasheet without prior notice.

© 10/2012 Total EMC Products Ltd. E & OE
The contents of the datasheet must not be copied by any means without prior written agreement.

