

TS106-125A IRON DUST CORE

General core information

Effective Parameters irrespective of material grade (per set)

Effective Length (L_e) 6.350mm

Effective Area (A_e) 0.654mm²

Effective Volume (V_e): 4.150mm³



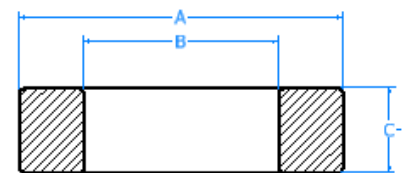
Technical Specifications (Coated)

Material	Initial Permeability (μ_{iac})	Ordering code
125A	181.49uH+8%	TS106125A

Test Conditions: 10 KH@500Gs

Dimensions (Coated)

Dimensions	(mm)	AL Value (nH/n ₂) +8%
A	27.70	157
B	14.10	157
C	11.99	157



SECTION B-B
SCALE 3 : 1

