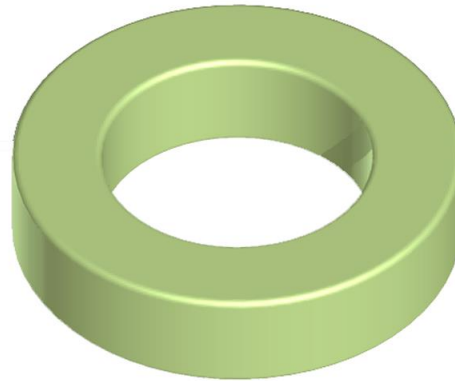


TH130-125A IRON DUST CORE

General core information

Effective Parameters irrespective of material grade (per set)

- Effective Length (L_e) 8.150mm
- Effective Area (A_e) 0.672mm²
- Effective Volume (V_e): 5.480mm³



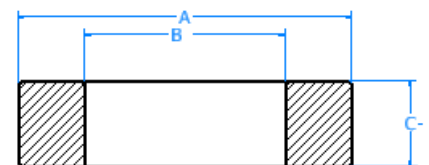
Technical Specifications (Coated)

Material	Initial Permeability (μ_{iac})	Ordering code
125A	234.82uH \pm 8%	TH130125A

Test Conditions: 10 KH@500Gs

Dimensions (Coated)

Dimension	(mm)	$AL(nH/N^2) \pm 8\%$
A	33.83	127
B	19.30	127
C	11.61	127



SECTION A-A
SCALE 3 : 1

