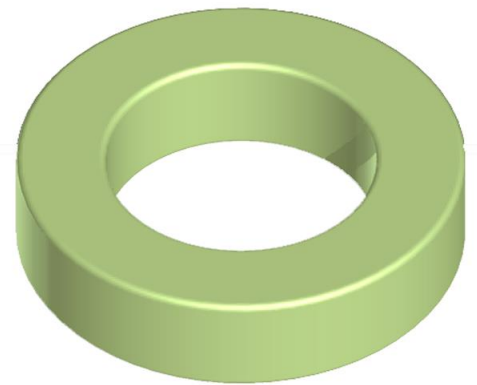


TH300-125A IRON DUST CORE

General core information

Effective Parameters irrespective of material grade (per set)

- Effective Length (L_e) 20.000mm
- Effective Area (A_e) 1.770mm²
- Effective Volume (V_e): 34.700³



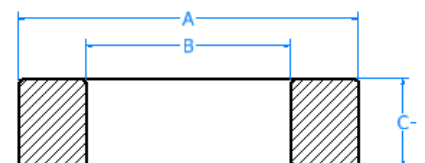
Technical Specifications (Coated)

Material	Initial Permeability (μ_{iac})	Ordering code
125A	1.596mH \pm 8%	TH300125A

Test Conditions: 10 KH@500Gs

Dimensions (Coated)

Dimensions	(mm)	AL Value (nH/n ₂) +8%
A	78.90	142
B	48.20	142
C	13.84	142



SECTION A-A
SCALE 3 : 1

