

TS080-125A IRON DUST CORE

General core information

Effective Parameters irrespective of material grade (per set)

- Effective Length (L_e) 5.090mm
- Effective Area (A_e) 0.226mm²
- Effective Volume (V_e): 1.150mm³



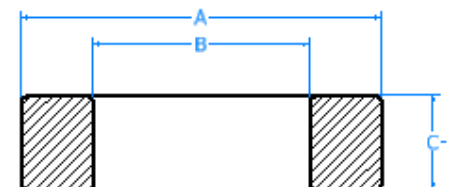
Technical Specifications (Uncoated)

Material	Initial Permeability (μ_{iac})	Ordering code
125A	49.57uH \pm 8%	TS080125A

Test Conditions: 10 KH@500Gs

Dimensions (Coated)

Dimensions	(mm)	AL Value (nH/n ₂) +8%
A	21.10	68
B	12.07	68
C	7.11	68



SECTION B-B
SCALE 3 : 1

