

TS157-125A IRON DUST CORE

General core information

Effective Parameters irrespective of material grade (per set)

- Effective Length (L_e) 9.840mm
- Effective Area (A_e) 1.072mm²
- Effective Volume (V_e):10.500mm³



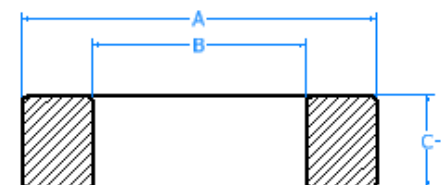
Technical Specifications (Coated)

Material	Initial Permeability (μ_{iac})	Ordering code
125A	454.27uH \pm 8%	TS157125A

Test Conditions: 10 KH@500Gs

Dimensions (Coated)

Dimensions	(mm)	AL Value (nH/n ₂) +8%
A	40.72	168
B	23.30	168
C	15.37	168



SECTION B-B
SCALE 3 : 1

