

TS200-125A IRON DUST CORE

General core information

Effective Parameters irrespective of material grade (per set)

- Effective Length (L_e) 12.730mm
- Effective Area (A_e) 1.251mm²
- Effective Volume (V_e): 15.930mm³



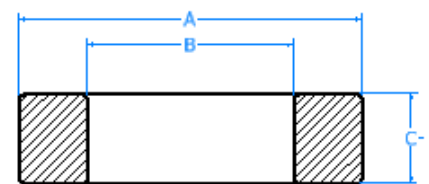
Technical Specifications (Coated)

Material	Initial Permeability (μ_{iac})	Ordering code
125A	702.85uH \pm 8%	TS200125A

Test Conditions: 10 KH@500Gs

Dimensions (Coated)

Dimensions	(mm)	AL Value (nH/n ₂) +8%
A	51.69	152
B	30.94	152
C	14.35	152



SECTION B-B
SCALE 3 : 1

