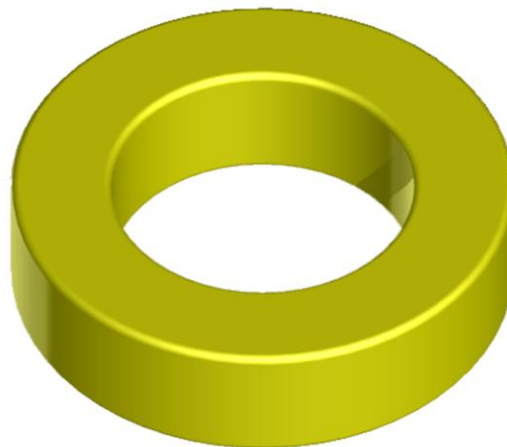


TT50-26 IRON DUST CORE

General core information

Effective Parameters irrespective of material grade (per set)

- Effective Length (L_e) 3.19mm
- Effective Area (A_e) 0.112mm²
- Effective Volume (V_e): 0.358 mm³



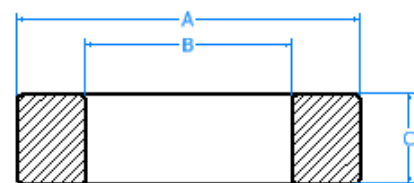
Technical Specifications (Coated)

Material	Initial Permeability (μ_{iac})	Ordering code
-26	3.30uH±10%	TT5026

Test Conditions: 10 KH@500Gs

Dimensions (Coated)

Dimensions	(mm)	AL Value (nH/n ₂) +8%
A	12.7	33.0
B	7.70	33.0
C	4.83	33.0



SECTION B-B
SCALE 3 : 1

