

TT130-26 IRON DUST CORE

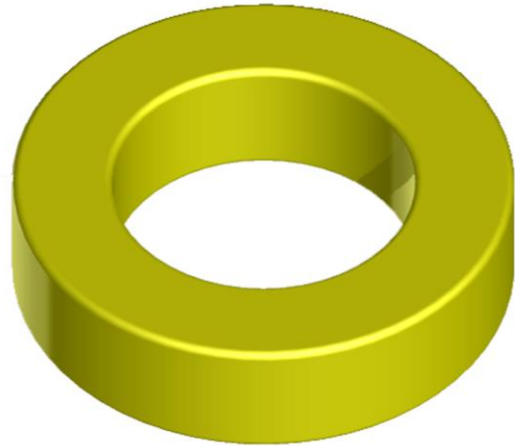
General core information

Effective Parameters irrespective of material grade (per set)

Effective Length (L_e) 8.28mm

Effective Area (A_e) 0.698mm²

Effective Volume (V_e): 5.78mm³



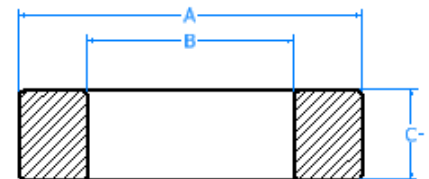
Technical Specifications (Coated)

Material	Initial Permeability (μ_{iac})	Ordering code
-26	8.10uH±10%	TT13026

Test Conditions: 10 KH@500Gs

Dimensions (Coated)

Dimensions	(mm)	AL Value (nH/n ₂) +8%
A	33.0	81.0
B	19.8	81.0
C	11.1	81.0



SECTION B-B
SCALE 3 : 1

