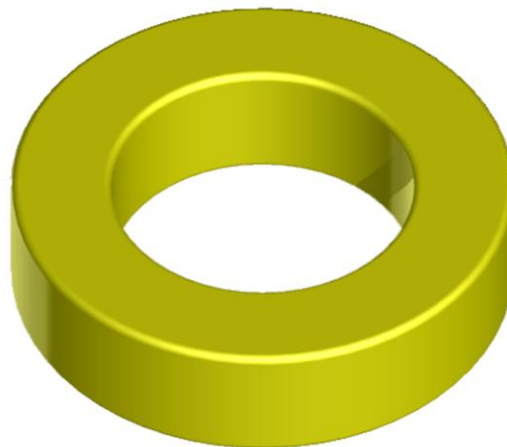


TT94-26 IRON DUST CORE

General core information

Effective Parameters irrespective of material grade (per set)

- Effective Length (L_e) 5.97mm
- Effective Area (A_e) 0.362mm²
- Effective Volume (V_e): 2.16mm³



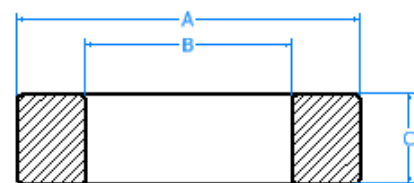
Technical Specifications (Coated)

Material	Initial Permeability (μ_{iac})	Ordering code
-26	6.00uH±10%	TT9426

Test Conditions: 10 KH@500Gs

Dimensions (Coated)

Dimensions	(mm)	AL Value (nH/n ₂) +8%
A	23.9	60.0
B	14.2	60.0
C	7.92	60.0



SECTION B-B
SCALE 3 : 1

