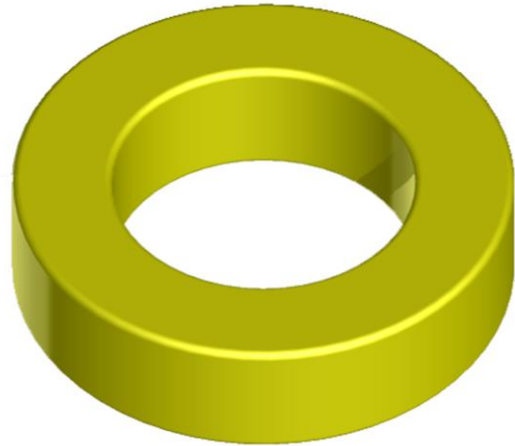


TT157-26 IRON DUST CORE

General core information

Effective Parameters irrespective of material grade (per set)

- Effective Length (L_e) 10.1mm
- Effective Area (A_e) 1.06mm²
- Effective Volume (V_e): 10.7mm³



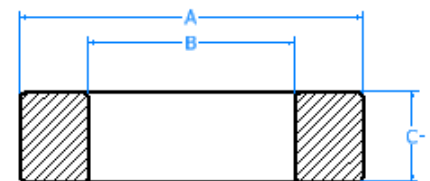
Technical Specifications (Coated)

Material	Initial Permeability (μ_{iac})	Ordering code
-26	10.00uH±10%	TT15726

Test Conditions: 10 KH@500Gs

Dimensions (Coated)

Dimensions	(mm)	AL Value (nH/n ₂) +8%
A	39.9	100.0
B	24.1	100.0
C	14.5	100.0



SECTION B-B
SCALE 3 : 1

