

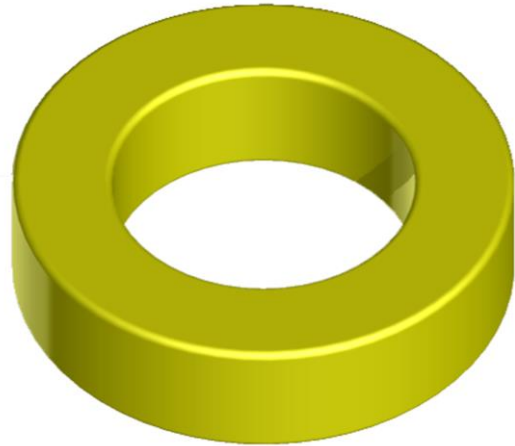
# TT184-26 IRON DUST CORE

TEMCT18426\*

## General core information

Effective Parameters irrespective of material grade (per set)

- Effective Length ( $L_e$ ) 11.2mm
- Effective Area ( $A_e$ ) 1.88mm<sup>2</sup>
- Effective Volume ( $V_e$ ): 21.0mm<sup>3</sup>



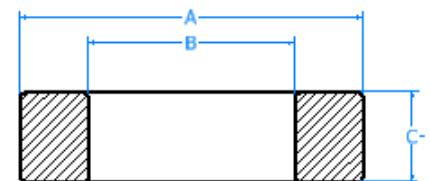
## Technical Specifications (Coated)

Material	Initial Permeability ( $\mu_{iac}$ )	Ordering code
-26	16.90uH $\pm$ 10%	TT18426

Test Conditions: 10 KH@500Gs

## Dimensions (Coated)

Dimensions	(mm)	AL Value (nH/n <sub>2</sub> ) +8%
A	46.7	169.0
B	24.1	169.0
C	18.0	169.0



SECTION B-B  
SCALE 3 : 1

