

TT300-26 IRON DUST CORE

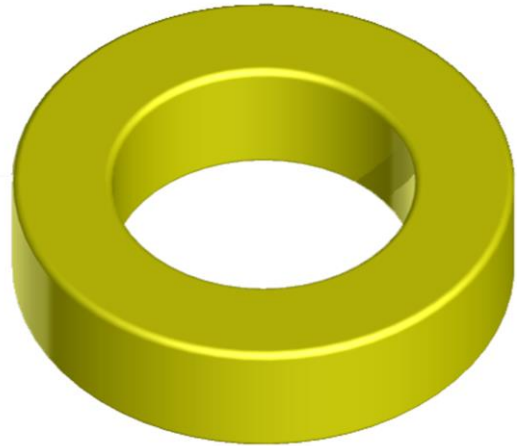
General core information

Effective Parameters irrespective of material grade (per set)

Effective Length (L_e) 19.8mm

Effective Area (A_e) 1.68mm²

Effective Volume (V_e): 33.4mm³



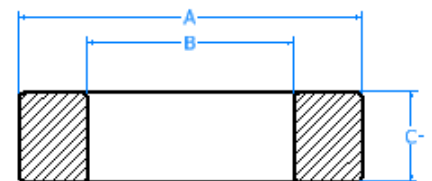
Technical Specifications (Coated)

Material	Initial Permeability (μ_{iac})	Ordering code
-26	8.00uH \pm 10%	TT30026

Test Conditions: 10 KH@500Gs

Dimensions (Coated)

Dimensions	(mm)	AL Value (nH/n ₂) +8%
A	77.2	80.0
B	49.0	80.0
C	12.7	80.0



SECTION B-B
SCALE 3 : 1

