

Yunpen Chassis Mount IEC Filters

Current Ratings: **15, 16 AMPS.**

Operating Voltage: Single Phase 125/250V A.C.

The Yunpen chassis mount range of IEC filters is an innovative development and has been designed to ensure EMC compliance for various equipment applications in particular for IT equipment. Its physical compactness along with its outstanding performance in attenuation of unwanted interference makes this range unique. The In-line design allows ease of application and installation including retro fitting.

The Yunpen chassis mount IEC filter series is a single stage device with effective attenuation characteristics at low frequencies, where normal IEC filters do not perform effectively. The housing is plated mild steel and the filter is encapsulated within this surround. This allows the unit to be securely mounted.

This filter is available in two different current ratings 15A and 16A. This makes it a very compact multi-application unit providing the ultimate attenuation package.



TYPICAL APPLICATIONS

- IT equipment
- Power supplies
- Laptop computers
- Uninterruptible power supplies

TECHNICAL ADVANTAGES

- Compact dimensions
- High attenuation characteristics
- Transient protection
- In line device

COMMERCIAL ADVANTAGES

- Reduced volume
- Reduced weight
- Cost effective

Technical Specifications

Part No	Rated Voltage	Rated Current	Leakage Current	Test Voltage		Insulation Resistance	Direct Current Resistance	Temperature Rise	Operating Temperature	Attenuation		Dimensions			Terminals Input
				Line to Line	Line to Ground					Normal Mode 25db	Common Mode 25db	A	B	C	
YM15T1	250V AC	15A	2.3mA MAX 250V, 50 Hz	1450V DC	2250V DC	100MΩMIN 250V DC	0.5ΩMAX	30°C MAX	-25 ~ +85°C	0.60 ~ 45MHz	0.10 ~ 40MHz	107.5	34 MAX	56 MAX	IEC with Vertical terminals
YM16T1		16A													IEC with Horizontal terminals

STANDARDS

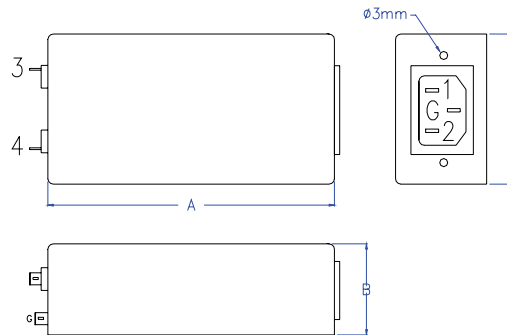
The Yunpen chassis mount IEC range of filters is built in accordance with the relevant BS, VDE, UL, CE & CSA safety standards.

All Total EMC Products Ltd filters & power supplies are designed to meet the latest requirements for Health and Safety.

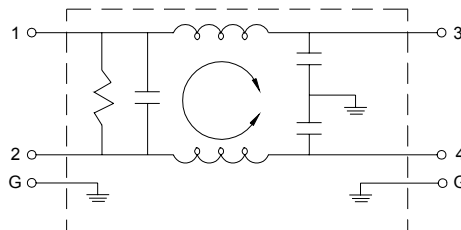
REGULATIONS

From the 15th of December 2004 all electrical/electronic apparatus - with few exceptions - sold or taken into service within the European Community must comply with the essential requirements of the EMC directive 2004/108/EC. Failure to do so is a criminal offence in the U.K.

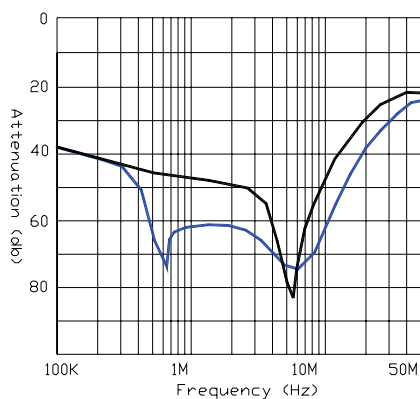
Dimensional Data



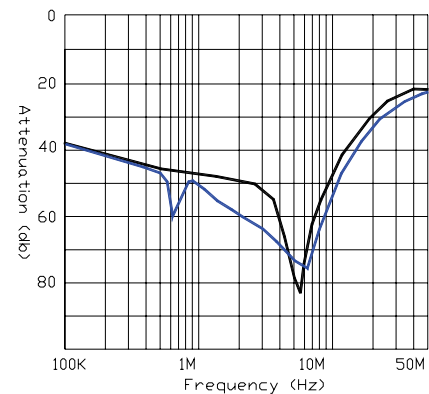
Schematic(s)



Performance characteristics insertion loss curves



Normal Mode
Common Mode



Part number / Ordering information

In addition to the standard range of filters & power supplies, Total EMC Products specialize in the design and manufacture of filters to suit your specific requirements. Due to continuous development Total EMC Products Ltd reserve the right to amend any information contained within this datasheet without prior notice.

©10/2012 Total EMC Products Ltd. E & OE

The contents of the datasheet must not be copied by any means without prior written agreement.