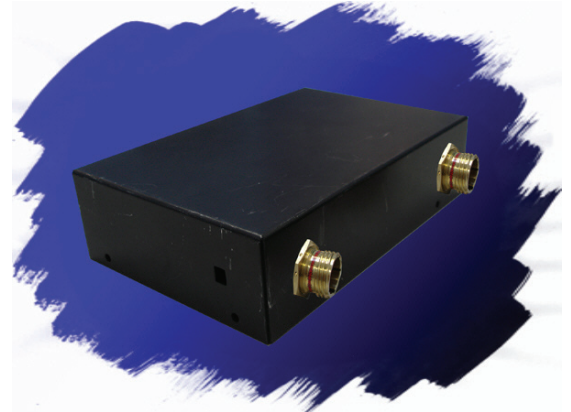


CUSTOM MPSU

Power Output: **120W DC SUPPLY – 150W AC SUPPLY** AMPS.
Output Voltage: 20V DC

This new power supply recently conceived to ensure compliance to Def Stan 59-41 issue 7 emission levels for above deck use, and land class B for land service; equivalent to Mil –Std 461 E. This innovative design structure has evolved with performance and power in mind. Unlike conventional power supplies this range has the advantages of having high output current & a compact size due to optimum components used within the power supply. The input power is auto ranging from 110V to 230V AC / 12V to 24V DC, and auto sensing between AC and DC supply's allowing for all applications & countries. The PSU will operate on 400Hz supply given by aircraft. It is envisaged that the input will have leading pins to allow auto disconnection, in a live state. Other pins on the output connector will also indicate loss of power milliseconds before the output is lost.



TYPICAL APPLICATIONS

- Laptop computers
- Flat screen PSU's
- Battery chargers
- Printers

TECHNICAL ADVANTAGES

- Compact dimensions
- High power levels
- Dual Supply
- Low losses
- Low earth leakage

COMMERCIAL ADVANTAGES

- Reduced volume
- Reduced weight
- Cost effective



Technical Specifications

Power (Watts)	Output Volts DC	Operating Voltage @ 50-400Hz	Earth Leakage mA	DC Input	Temp Rise @ Full Load	Termination Type	Case Material	IP	Humidity Rh %	Storage Temp °C	Operating Temp °C	Weight	Shock	Vibration
120	20	90 - 260	3	9 - 36	<40°C	As Required	Aluminium	54	0-95	-20 +70	-20 +55	1.25Kg	15G	1G

STANDARDS

The MPSU range of power supplies are built in accordance with the relevant BS, VDE, UL, CE & CSA safety standards.

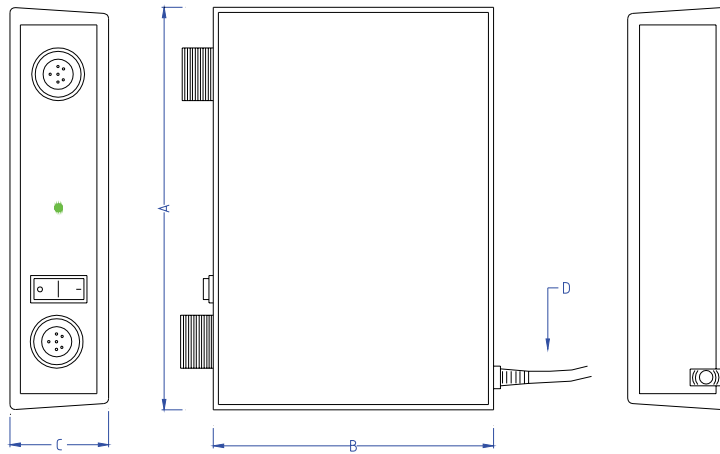
All Total EMC Products Ltd filters & power supplies are designed to meet the latest requirements for Health and Safety, Particularly BS EN 60950

The MPSU range is was specifically designed to assist laptop computers in gaining compliance with European and International Emission standards. eg. EN55011, EN55014, EN55022 and EN61000. Military Def Stans 59/41, 59/411. Mil Standards 461/462.

REGULATIONS

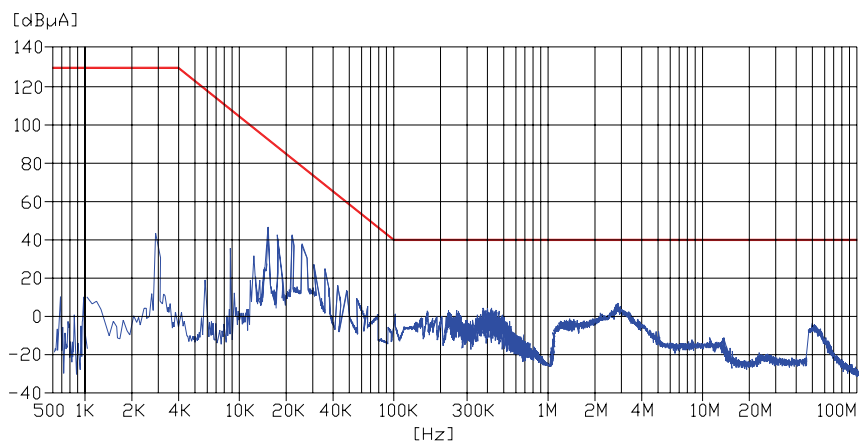
All electronic equipment that is commissioned into military service must comply with the relevant Defence Standards.

Dimensional Data



DIMENSIONS			
A	B	C	D
155	108	38	1 MTR

Performance characteristics insertion loss curves



Part number / Ordering information

Part No: RAL/120/2

In addition to the standard range of filters & power supplies, Total EMC Products specialize in the design and manufacture of filters to suit your specific requirements. Due to continuous development Total EMC Products Ltd reserve the right to amend any information contained within this datasheet without prior notice.

© 10/2012 Total EMC Products Ltd. E & OE
The contents of the datasheet must not be copied by any means without prior written agreement.