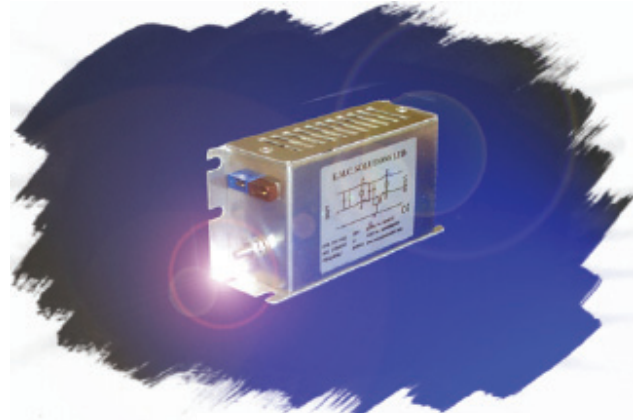


Harmonics Range

Current Ratings: **3, 6, 10, 16, 20** AMPS.
Operating Voltage: Single Phase 230V A.C.

The u202 filter Range has been specifically designed to overcome EMC problems inherently caused by switched mode power supplies, in applications especially where size constraints and low earth leakage is an issue. These new ranges of micro size filters have high attenuation factors and high current capabilities without having a large profile. Switched mode power supplies electronically switch high voltages and currents to improve efficiency and reduce losses in power conversion. This switching generates high levels of Radio Frequency Interference (RFI) and high energy surges, which can disturb or damage other electronics circuits. The u202 series is a two stage design in a 2 line format, with excellent suppression characteristics particularly at 10K - 200KHz where power supplies tend not to perform and require effective attenuation, the filter will also effectively reduce harmonic distortion. They also have very low earth leakage which gives the added benefit of being able to be used in medical devices and applications. The filter components are housed in compact chassis mounted, aluminum enclosures that allows side or base mounting, it is then encapsulated in a polyurethane potting compound to give excellent protection against shock and vibration. These combinations give a total range of over 20 filter applications.



TYPICAL APPLICATIONS

- Switched mode power supplies
- High current switch mode power supplies
- Thyristor driven equipment
- Air conditioners/Fan controllers
- Uninterruptible power supplies
- Pulse width modulation circuits
- Medical devices and applications

TECHNICAL ADVANTAGES

- High current capability
- Micro size
- High common & differential mode
- insertion loss
- Improved mid frequency performance
- Side or base mounting
- Optional input transient suppression to-
- suit application

COMMERCIAL ADVANTAGES

- Assists compliance with the EMC directive
- State of the art technology ensures superior performance
- Competitively priced
- Compact size - Reduced weight - Cost effective component

Technical Specifications

Current (Amps)	No of Lines	Operating Voltage @ 50-60Hz	Max AC Volt Drop @ Full Load	Earth Leakage uA	Inductance Per Line (Typical) mH	Storage Temp Range	Temp Rise @ Full Load	Termination Type	Dimensions								
									A	B	C	D	E	F	G	H	i
3	2	230V	<1/Line	5	56 + 3 (x2)	-25 to +85 C	<40 C	Fast-On	120	60	40	109	30	52	24	5.2	M4 x 15mm
6					4 + 3 (x2)				120	60	40	109	30	52	24	5.2	M4 x 15mm
10					3 + 1.5 (x2)				120	60	40	109	30	52	24	5.2	M4 x 10mm
16					3 + 1 (x2)				170	80	50	160	10	30	36	5.2	M6 x 20mm
20					2 + 0.6 (x2)				170	80	50	160	10	30	36	5.2	M6 x 20mm

STANDARDS

The u202 range of filters are built in accordance with the relevant BS, VDE, UL, CE & CSA safety standards.

All Total EMC Products Ltd filters & power supplies are designed to meet the latest requirements for Health and Safety, Particularly EN 60939-2-2005

The u202 range is specifically designed to assist AC input - DC Output industrial frequency converters to meet European Emission standards. E.g. EN55011, EN55014, EN55022, EN50081-2 and EN50081-1.

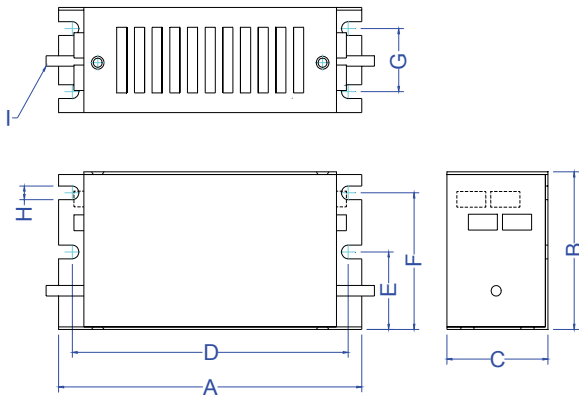
REGULATIONS

From the 15th of December 2004 all electrical/electronic apparatus - with few exceptions - sold or taken into service within the European Community must comply with the essential requirements of the EMC directive 2004/108/EC.

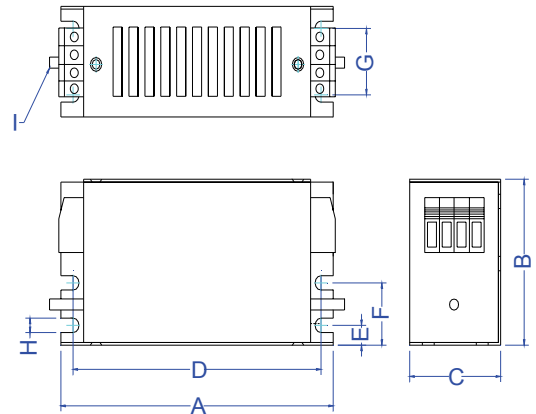
Failure to do so is a criminal offence in the U.K.

Dimensional Data

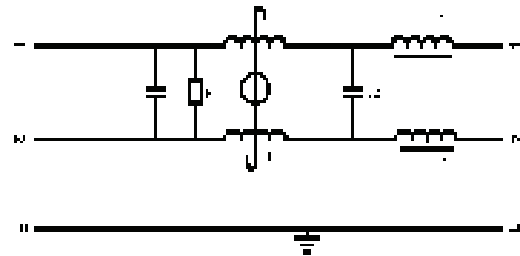
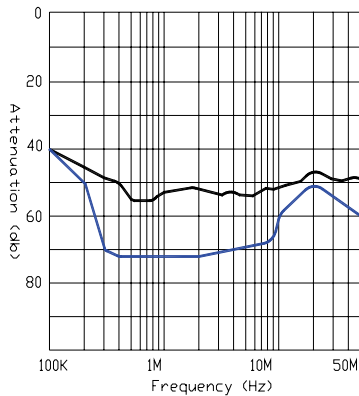
3, 6 & 10A 2 Line



16 & 20A Line



Performance characteristics insertion loss curves & Schematic



Part number / Ordering information

U202/*/2/2/***

U202 = Range of filter

***** = No of Lines on filter (2,3,4)

***** = Options (listed below)

******* = Amp Rating of filter

2 = No of Stages on filter

Options: T = Transient, H = High Performance, M = Medical,
E = Earth Line Choke, - = neither (no options)

In addition to the standard range of filters & power supplies, Total EMC Products specialize in the design and manufacture of filters to suit your specific requirements.

Due to continuous development Total EMC Products Ltd reserve the right to amend any information contained within this datasheet without prior notice.

© 10/2012 Total EMC Products Ltd. E & OE

The contents of the datasheet must not be copied by any means without prior written agreement.

Example: U202/010/2/2/- (This is a 10A 2 line two stage unit with no options.)