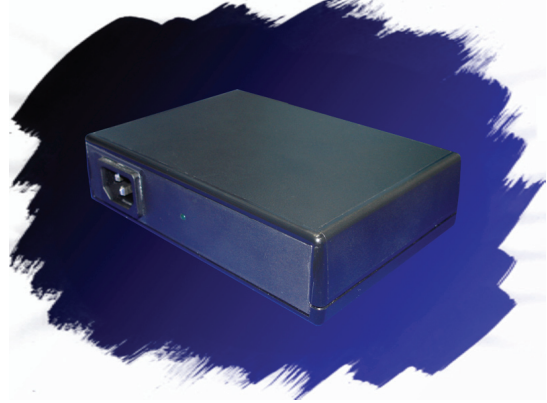


Military Compliant Power Supplies

Power Output: 45-70W

Output Voltage: 9, 12, 15, 18, 20 & 24V



This exciting new range recently designed to ensure compliance to mil std emission levels for below deck use. This innovative design structure has evolved with performance and power in mind. Unlike conventional power supplies this range has the advantages of having low earth leakage, high output current & a compact size due to the optimum components used within the power supply. The input power is auto ranging from 90V to 230V AC, allowing for all applications & countries.

TYPICAL APPLICATIONS

- Laptop computers
- Flat screen PSU's
- Battery chargers
- Printers

TECHNICAL ADVANTAGES

- Compact dimensions
- High power levels
- Power cord retaining clip available
- Low losses
- Low earth leakage

COMMERCIAL ADVANTAGES

- Reduced volume
- Reduced weight
- Cost effective



Technical Specifications

Power (Watts)	Output Volts	Operating Voltage @ 50-60Hz	Earth Leakage mA	Temp Rise @ Full Load	Termination Type	Case Material	Dimensions			
							A	B	C	D
50	3 - 24	90V - 260V	3	<40°C	As Required	UL94V0	120	60	38	2 MTR
70	19-8						155	108	38	1.8MTR

STANDARDS

The MPSU range of power supplies are built in accordance with the relevant BS, VDE, UL, CE & CSA safety standards.

All EMC Solutions filters & power supplies are designed to meet the latest requirements for Health and Safety, Particularly BS EN 60950

The MPSU range is was specifically designed to assist laptop computers in gaining compliance with EMC Defence standards such as European and International Emission standards. eg. EN55011, EN55014, EN55022 and EN61000.

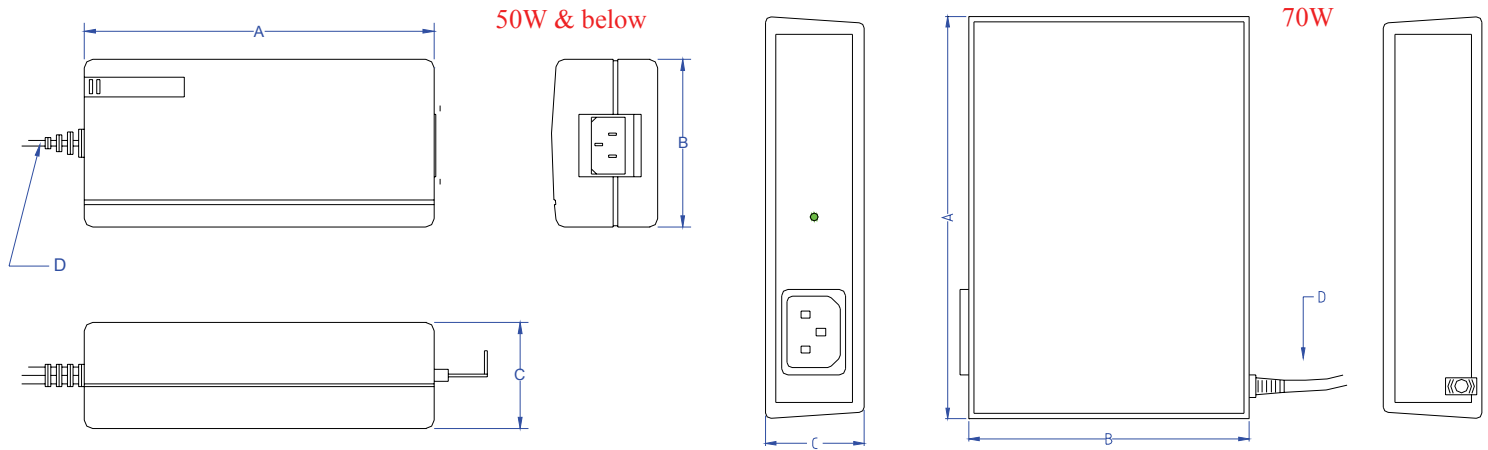
Military Def Stans 59/41, 59/411.

Mil Standards 461/462.

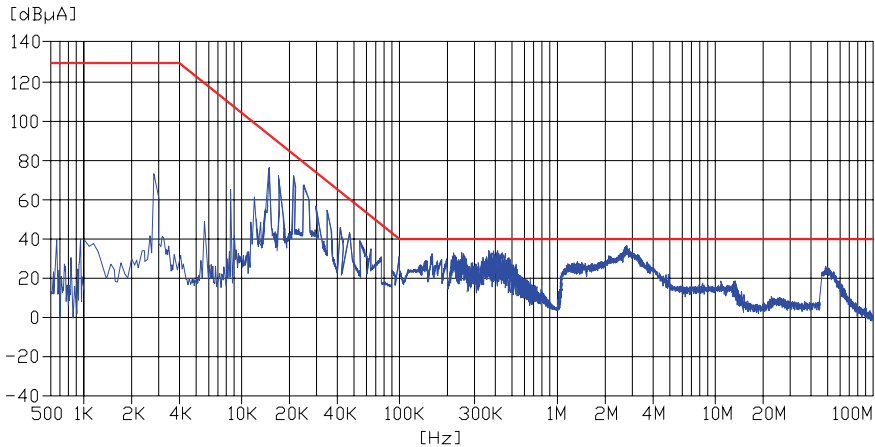
REGULATIONS

All electronic equipment that is commissioned into military service must comply with the relevant Defence Standards.

Dimensional Data



Performance characteristics insertion loss curves



In addition to the standard range of filters & power supplies, Total EMC Products specialize in the design and manufacture of filters to suit your specific requirements. Due to continuous development Total EMC Products Ltd reserve the right to amend any information contained within this datasheet without prior notice.

© 10/2012 Total EMC Products Ltd. E & OE
The contents of the datasheet must not be copied by any means without prior written agreement.

Part number / Ordering information

MPSU/*/**/S/1**

MPSU = Range of Product *** = Voltage Rating
* = Output Volts S = Switchmode
* = Options (listed below)

Options: 1 = CR21 Output Plug

Ordering info for 70W DC PSU's only

MPSU/*/D/S/***

MPSU = Range of Product *** = Voltage Rating
D = DC Output S = Switchmode
* = Wattage